

RUST IN A JAR

WHAT?

AUTENTICO RUST IN A JAR is a part of the **CREATIVE POWDER** range and it consists of three highly pigmented powders to create truly stunning rust effects on walls, furniture, lamp bases, candle holders, without the need of using dangerous corrosive ingredients.

WHERE?

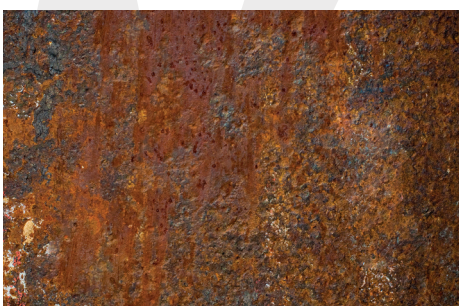
RUST IN A JAR can be used on walls or on furniture, lamp bases and such items.

HOW?

ON WALLS:

Start by creating the subsurface. Imagine how natural rust should look like. Rust is a natural oxidation process that creates irregular patches of yellow/orange/red hues with highs and lows. You can often see through layers of rust revealing the original and/or aged colour of the wall.

Below two images of real rust. Look carefully how the patches are formed. The original colour black in the back, followed by the golden rust patches (the older the lighter). Then followed by the reds/orange patches. On top of this the images show dark rust covering parts of the golden and red rust patches.



RUST IN A JAR

To create the illusion, start by painting the subsurface.

Make sure the suction of the walls is even. In case of doubt apply a coat of **UNDERCOAT** first.

Paint the subsurface using Autentico Vintage, colour Nocturnal. Vintage is a porous paint and is ideal as a base for rust effects. While the paint is still wet, paint patches with Vintage, colour Dark Rust. Make smudges to create a mottled effect showing patches of black and lighter hues, just like a beginning oxidation process would do. Let the coats dry before continuing.

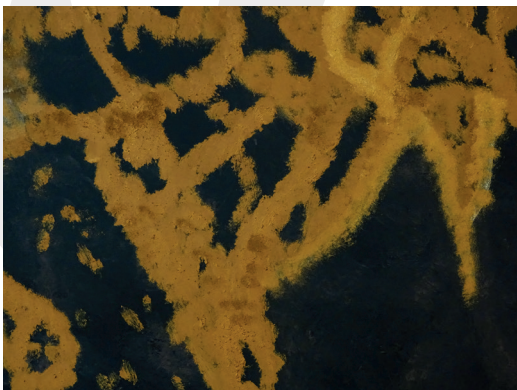


Wall painted with Autentico Vintage, colour Nocturnal



Mottled effect with patches of Nocturnal and Dark Rust

Next step is to create the first oxidation layer. In the illusion of rust, this is the oldest layer of rust. Mix 1 part of **GOLDEN RUST** powder with 1 part of Autentico **RUST BASE**. The result is a thick and grainy paste. Apply by brush in an irregular pattern. While the paste is still wet, apply dry powder of **GOLDEN RUST** in the patches of **GOLDEN RUST** paste to create highlights. Let dry to avoid smutches with the next layers.



Patches of **GOLDEN RUST** applied with a paste of **GOLDEN RUST**

RUST IN A JAR

Next step is to create the second oxidation layer. In the illusion of rust, this is the next layer of rust. Mix 1 part of **RED RUST** powder with 1 part of Autentico **RUST BASE**. The result is a thick and grainy paste. Apply by brush in an irregular pattern on top and overlapping the patches of **GOLDEN RUST**. Only cover parts of the prior layer of **GOLDEN RUST**. While the paste is still wet, apply dry powder of **RED RUST** in the patches of **RED RUST** paste. Let dry to avoid smutches with the last layer.



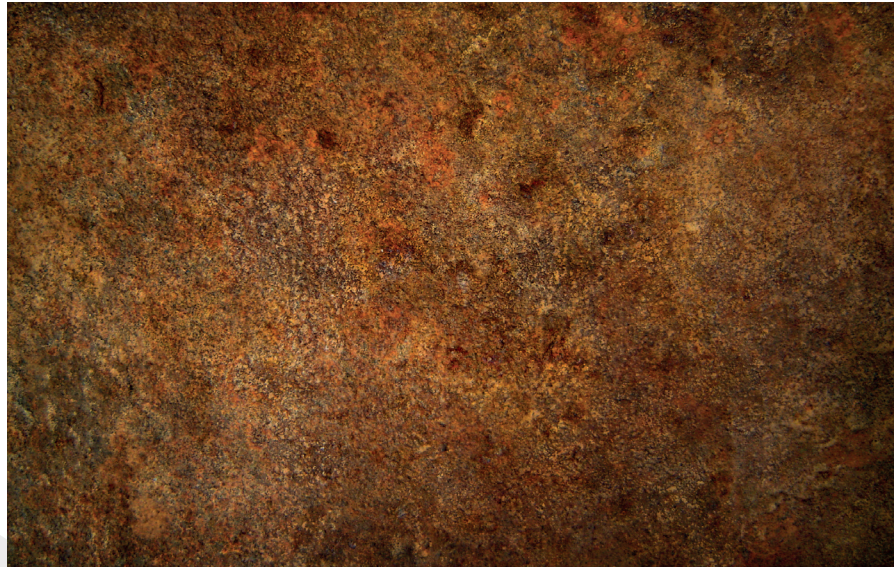
Patches of **RED RUST** applied with a paste of **RED RUST**

Next step is to create the third oxidation layer. In the illusion of rust, this is the last layer of rust. Mix 1 part of **DARK RUST** powder with 1 part of Autentico **RUST BASE**. The result is a thick and grainy paste. Apply by brush in an irregular pattern on top and overlapping the other patches. Only cover parts of the prior layers. While the paste is still wet, apply dry powder of **DARK RUST** in the patches of **DARK RUST** paste. Let dry and enjoy your work.



Patches of **DARK RUST** applied with a paste of **DARK RUST**

RUST IN A JAR



Final result of “**RUST IN A JAR**” application on a wall



FINISH AND PROTECTION

RUST IN A JAR on a wall doesn't need additional protection unless applied in high traffic areas.

In these cases we recommend protection with either Autentico **SEALER** or Autentico **FLOOR VARNISH**.

Autentico **SEALER** will penetrate the surface making your work water repellent but slightly darker.

Autentico **FLOOR VARNISH** creates an extra film on top of your work. It will be protected against wear and tear. Be aware applying **FLOOR VARNISH** too thick might result in white patches on your work. We recommend diluting the first coat with 25 % water and the second coat with 10 %.

RUST IN A JAR

ON FURNITURE, LAMP BASES AND MORE

Opposite to application on walls, applying **RUST IN A JAR** on furniture and lamp bases (like in this guide) is even easier. Because of the smaller surfaces, there is no need to make a paste first. You can apply the dry powder straight into the wet paint.

Below a guide on how to apply **RUST IN A JAR** on a lamp.



Cover lamp base with a coat of Vintage Nocturnal



Paint patches of Vintage, colour Dark Rust

RUST IN A JAR



Press **RUST IN A JAR POWDERS** in wet paint



Mix **RUST IN A JAR POWDERS** for a perfect illusion. Leave **GOLD RUST** in the background, followed by **RED** and **DARK**

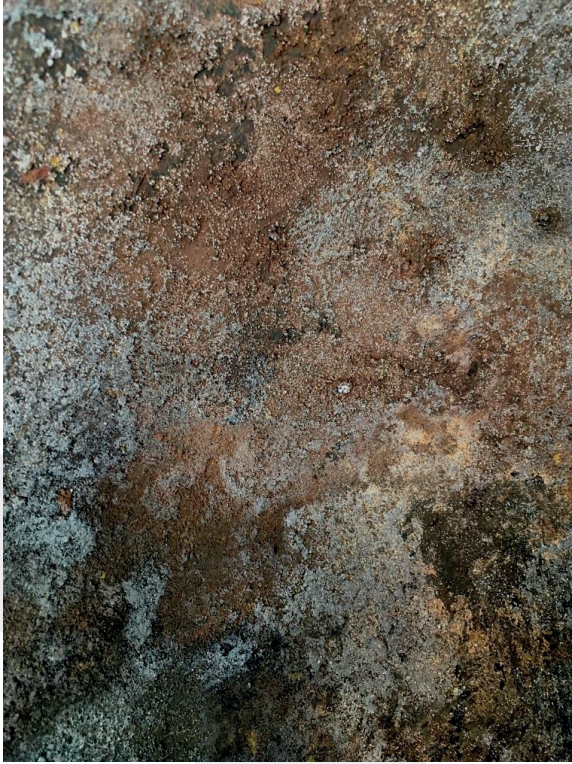


Dabble with a cotton cloth



Leave to dry for several hours.

RUST IN A JAR



Some patches might dry lighter depending on subsurface



Apply Autentico **BLACK WAX** to make result darker