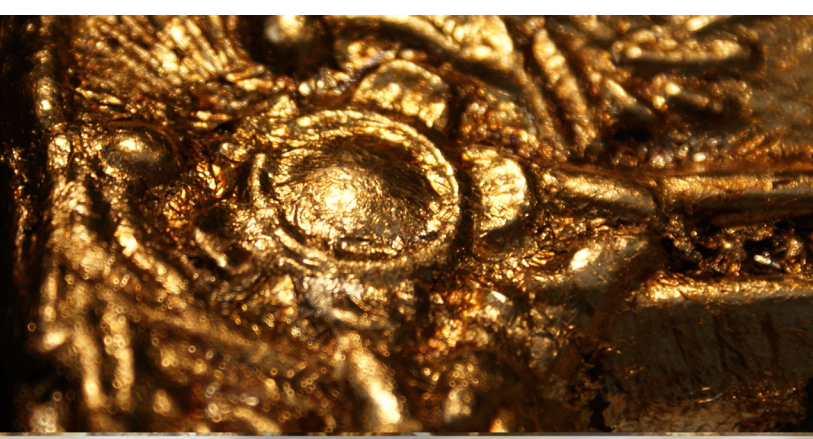


# AUTENTICO

guidance for

# GILDING



1

Start working on a mineral surface. A base coat of Autentico Vintage is recommended. Apply a coat of Autentico Permacoll size (white or red) and let dry for 30 minutes. This coat remains tacky



2

Apply gold, silver or copper leaf with a dry brush or your fingertips. Make sure you cover the entire prepared area to avoid exposure of glued surfaces. Leave to dry for a couple of minutes



3

After your metal leaf has dried, remove loose parts with our "gold duster" brush. Finish with either a coat of Autentico Permacoll Patina or with one of the Autentico waxes.



4

Ready !

